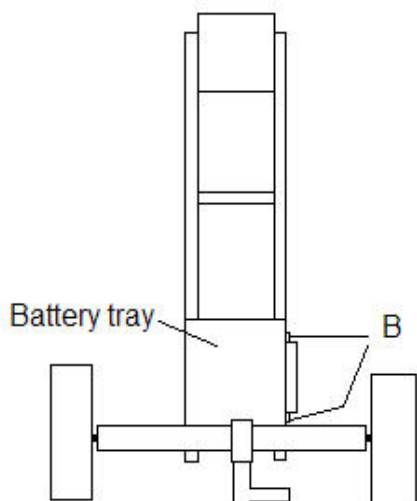


FITTING INSTRUCTIONS WARRIOR 400 CONTROLLER

DISCONNECT THE BATTERY BEFORE PROCEEDING



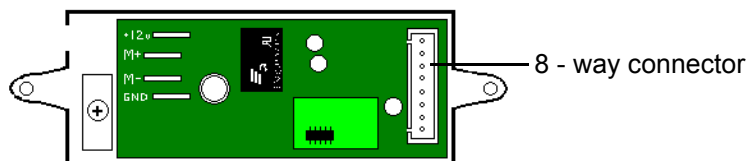
Warrior 400 - top view

The Controller is situated to the right of the battery tray.

Remove the right wheel to gain easier access to the controller.

To remove the existing controller, unfasten the retaining bolts (B) using a Phillips screwdriver which is supplied in the tool kit.

Usual colour sequence:
please note in some
models the Green and
Yellow cables are re-
versed



Remove the rubber weather seal.

Note the colour and position of the four coloured cables. The usual sequence is Red, Yellow, Green Black, but on some models the yellow and green are reversed.

Gently remove the four coloured cables attached to the controller terminals. It may be easier to grip the terminals with needle-nosed pliers to remove these cables

Gently remove the 8-way connector and its black cable from its socket. It is preferable to grip the 8-way connector (with pliers if necessary) rather than pull on the cable.

Once removed, discard the old Controller.

Using the new Controller, refit the cables in the same order as they were removed and ensure the cables are seated in the notch in the Controller casing.

Connect the battery and ensure all is correct. Disconnect the battery before proceeding.

Refit the rubber weather seal.

Refit the controller to the battery tray using bolts (B)

If you encounter any problems, or have difficulty in following these instructions, please call us on 01933 670997 where we will be happy to help.