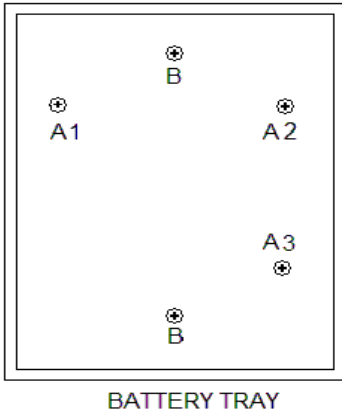


FITTING INSTRUCTIONS

CHALLENGER 300 CONTROLLER

The Controller is situated underneath the battery tray.



To remove the existing controller, first unfasten the battery tray retaining bolts A1, A2, & A3 using a Phillips screwdriver and an 8mm spanner. Both tools are supplied with the trolley.

It may be necessary to prise off any plastic caps covering the nuts using a flat blade screwdriver or similar.

It may also be necessary to use the spanner 'end on' in order to grip the nut on the bolt holding nylon bearing (A3)

Remove the screws 'B' which hold the Controller in place.

If necessary, cut the cable tie(s) holding the cables (coming from the Controller) to the frame.

NB It is not usually necessary to completely remove the battery tray. It need only be raised sufficiently for the Controller to be removed.

Slide the Controller from beneath the battery tray.

Remove the rubber weather seal.

Note the colour and position of the four coloured cables. The usual sequence is Red, Yellow, Green Black, but on some models the yellow and green are reversed.

Gently remove the four coloured cables attached to the controller terminals. It may be easier to grip the terminals with needle-nosed pliers to remove these cables

Gently remove the 8-way connector and its black cable. It is preferable to grip the 8-way connector (with pliers if necessary) rather than pull on the cable.

Once removed, discard the old Controller.

Using the new Controller, refit the cables in the same order as they were removed and ensure the cables are seated in the notch in the Controller casing.

Connect the battery and ensure all is correct. Disconnect the battery before proceeding.

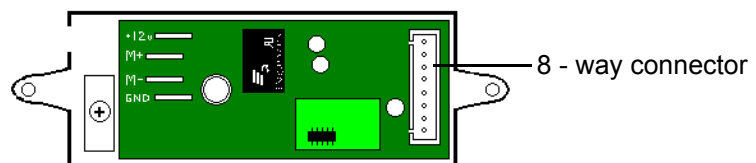
Refit the rubber weather seal.

Reattach the Controller underneath the battery tray using screws 'B,' ensuring that the rubber seal is not twisted or displaced.

Refasten the battery tray to the trolley. Please ensure that the washers are fitted between the nuts and the nylon fittings.

Replace any cable ties you may have removed during this procedure.

Usual colour sequence:
please note in some
models the Green and
Yellow cables are re-
versed

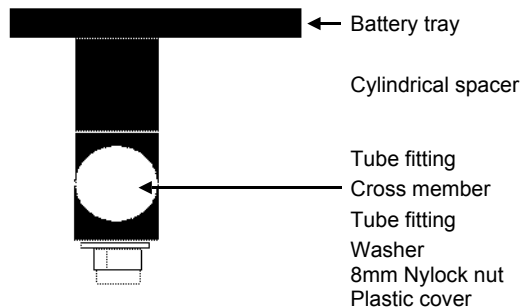


If you encounter any problems, or have difficulty in following these instructions, please call us on 01933 670997 where we will be happy to help.

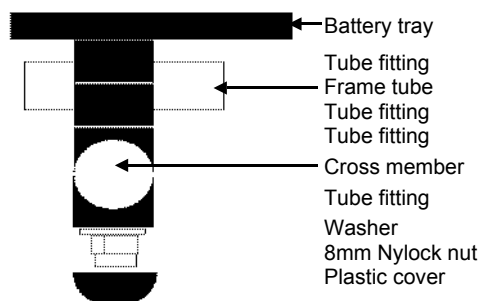
ADDITIONAL INFORMATION

If it has been necessary to remove the battery tray completely, below is the correct assembly order for the 3 bolts, A1, A2 and A3.

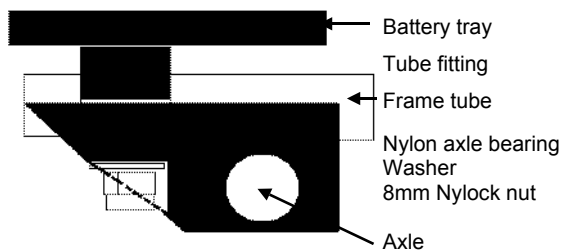
Fittings sequence: A1



Fittings sequence: A2



Fittings sequence: A3



TROUBLESHOOTING

If after connecting the battery and switching on, there are no lights on the trolley or no power to the motor, check the following:

- 1) Is the 'on-off' switch set to 'on'?
- 2) Check all connectors are firmly pushed on to their terminals
- 3) Check the 8-way connector is fitted correctly in its socket
- 4) Check the battery fuse.
- 5) If there is still no power, please call Service on 01933 670997

If after connecting the battery, the axle turns backwards, reverse the yellow and green cables.

If any part is lost or broken, please call Service for a free replacement.

**Please note: This is an Authorised Repair undertaken at our request.
Carrying out this procedure does NOT invalidate your Warranty.**